

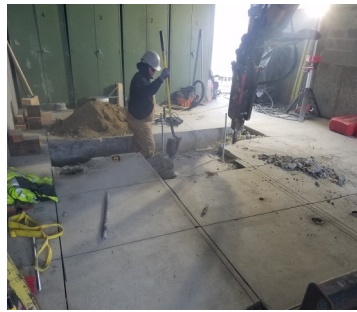
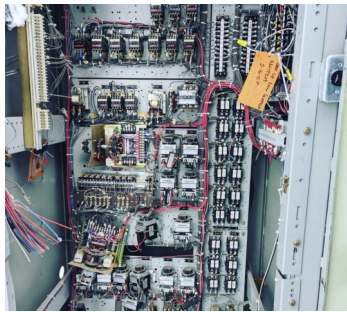


District Newsletter

2022 IRRIGATION SEASON



Spring is almost here and we expect to begin our irrigation start up procedures in late March. Once your Irrigation Assessment has been paid, you can expect to receive water at your meter the first week of April barring any unforeseen setbacks. Cans/turnouts will not be turned on until the assessments are paid in full.



PUMPING PLANT UPGRADE PROJECTS

Phase 1 of our Motor Control Center (MCC) Replacement Project at the LC Pumping Plant was completed in the spring of 2021 on time and within budget.

Phase 2 at the A Pumping Plant is underway, and as of the printing of this newsletter, it is projected to be substantially completed on time for startup in late March with the final project completion here in April. In addition to the MCC replacement at plant A, we are also replacing four (4) 600 hp motors as well.

The bidding for Phase 3 which includes our B, C, D, and F pumping plants will take place this spring with construction slated for the winter of 2022/2023.



Rules of Thumb for Water Use on Lawns and Gardens

- One deep watering is much better than watering several times lightly.
- Lawns need about 1 inch of water each week. If it is hot, apply an inch of water every 3 days.
- Watering to a depth of 4-6 inches encourages deeper, healthier root development. It also allows longer periods between watering.
- To measure the water, put an empty tuna can on the lawn while watering. Stop watering when the can is full.
- Early morning or night is the best time for watering to reduce evaporation.
- Leave the grass clippings to decompose on the lawn. Annually, this will provide nutrients equivalent to one or two fertilizer applications. Keep grass at least two inches high to shade roots and hold moisture.



Volume 29, Issue 2
February 1, 2022



Rodney Anderson
Secretary-Manager
randerson@lcrd.org

District Board:

Dave Clark
Todd Jeffries
Chad Steiner
Cappy Peterson
Allan Torgesen

District Office:

509-687-3548
80 Wapato Way
Post Office Box "J"
Manson, WA 98831

WWW.LCRD.ORG



IRRIGATING FROM THE DOMESTIC SYSTEM

If you irrigate from your drinking water, your irrigation allotment is available only between April 1st and October 15th, and will appear on your Utility Bill as shown as an example below.

If your annual assessment is not paid by April 1st, you will not get an irrigation allotment on your Utility Bill. Therefore, any water you use above your normal allotment, will be billed at the normal rate of \$5.07 per 100 cubic feet.

Several water users over the past year have run into unnecessary excess water charges due to the usage of their entire allotment before the irrigating season was complete. The water bills are designed to keep you aware of the irrigation allotment on your meter and the balance remaining. It is important that you monitor this allotment and manage your irrigation use accordingly.

Using the domestic water for irrigating **REQUIRES** you to have a double check valve assembly (DCVA) installed as per District Standards. Annual testing ensures that your device is operating properly. You may also need a pressure reducing valve (PRV) to protect your pipes if you are in a high pressure zone.



	Allotment (cu. ft.)	Previous Used	Current Use	Total Used	Balance	% Allotment Used
Irrigation Allotment	36590	22917	6604	29521	7069	81

WHAT YOU NEED TO KNOW ABOUT USING THE FEDERAL IRRIGATION WATER

- Water may only be used on lands classified as "Irrigable" by the Federal Bureau of Reclamation. Maps showing the irrigable acreage are available in our office.
- The water is **NOT POTABLE** and cannot be consumed.
- Water will **NOT** be turned on until you've paid your assessment.
- Connecting an irrigation water line to the domestic water is a direct cross-connection, a violation of state law, even if separated by a valve and will not be allowed under any circumstance.
- Your annual allotment is **36 inches** of water, per irrigable acre.
- All plumbing after the turnout is the responsibility of the property owner to design, install and maintain. Please use a Romac coupler or union to connect to the valve located outside of the can.
- The system allows for **1 Cubic Foot per minute (CFM), per acre.**
- If you exceed your (CFM) allowance, your water will be shut off. This rule is crucial to abide to, in order for us to keep enough water in our tanks to service everyone in the District.
- **SHARED TURNOUTS:** Irrigation turnouts are often shared by multiple owners. It is up to each property owner to file agreements for maintaining any shared service mainlines and for having easements in place to access the irrigation water. LCRD is only responsible for providing water to the meter.
- **IRRIGATION EXCESS:** LCRD will read the meters at the end of October for a final read. If you have used more water than you are allotted, you will receive an irrigation excess bill on December 1st. If you are on a shared turnout, then the total excess amount will be divided by acreage and a portion is assigned to each property owner.
- Our policy states that you design your own private irrigation system. We recommend the installation of a filter, a pressure reducing valve and a pressure gauge. It is your responsibility to protect your own system from potential damage and pressure spikes.
- Never try reducing flow by partially opening the outside valve. Doing so will destroy the valve over time. Either it's fully open or it's fully closed.
- The irrigation system is not designed for frost protection or for fruit cooling purposes. The irrigation season will not be forwarded or extended for these purposes.
- All of the District's irrigation mainlines and turnouts are within a 50-foot easement benefiting the Federal Bureau of Reclamation. They are called out as "25 feet on each side of the irrigation pipe as it lays". No buildings or permanent structures may be placed upon these easements.

